

February 15 OFFSIDE

Comedy/Drama/Sport. Iran (2007), 93 min. Rated PG. Persian. "You look like a total girl," says one sports fan to his busmate. That's not so out of the ordinary in this testosterone-laden world—especially on a rowdy bus like this one, headed to a soccer arena with team chants and air horns blaring. But the thing is, she actually is a girl; and while many of the men are also wearing face paint, this is modern Iran, where women are forbidden from attending games. She rides in secret, hoping to sneak in...



February 29 THE RAIN PEOPLE

Drama. USA (1969), 101 min. Rated R. English. Francis Ford Coppola's 4th feature is a fascinating road movie made entirely on location with a minimal crew and a constantly evolving script. Its curious admixture of feminist tract and pure thriller stars Shirley Knight as the pregnant Long Island housewife who runs away in search of her identity, Robert Duvall (a darkly amorous traffic cop) and James Caan (a football player left mindless by an accident).



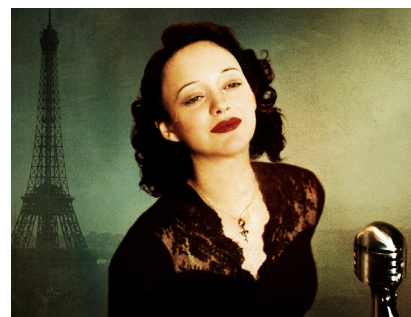
March 7 BROTHERS

Drama. Denmark (2004), 114 min. Rated R. Danish. Set against the ongoing war in Afghanistan, *Brothers* examines the relationship between Jannick, a ne'er-do-well just released from prison, and his brother Michael, a solid family man. Everything changes when Michael is deployed to Afghanistan as part of a UN peacekeeping mission. His helicopter is shot down and Michael is presumed dead. After several months of hellish imprisonment, Michael returns home a broken and embittered man to find that everything is different from the way it was when he left.



March 21 LA VIE EN ROSE

Biography/Drama/Music. France/UK/Czech Republic (2007). 140 min. Rated PG-13. English and French. "Marion Cotillard's feral portrait of the French singer Edith Piaf as a captive wild animal hurling herself at the bars of her cage is the most astonishing immersion of one performer into the body and soul of another I've ever encountered in a film....It is an entirely convincing portrait of instinctive genius and raw life force wedded to self-destruction." (Stephen Holden in the NY Times)



April 4 SPRING, SUMMER, FALL, WINTER... AND SPRING

Drama. South Korea/German (2003). 103 min. Rated R. Korean.



This exquisitely beautiful and very human drama is entirely set on and around a tree-lined lake where a tiny Buddhist monastery floats on a raft amidst a breathtaking landscape. Writer/director Kim Ki-duk has crafted a totally

original yet universal story about the human spirit, moving from Innocence through Love and Evil to Enlightenment and finally Rebirth.

April 18 CAVE OF THE YELLOW DOG

Drama. Mongolia/Germany (2005). 93 min. Unrated. Mongolian.

From the co-director of *The Story of the Weeping Camel*, *Cave of the Yellow Dog* is a quiet gem, suitable for all ages. It is a simple girl-and-dog story, set in remote Northwest Mongolia. Young Nansaa finds a small, friendly dog in a cave. She brings



it home, but her father thinks the dog will attack his sheep and doesn't want her to keep it.

May 2 SECRET OF ROAN INISH

Family/Fantasy. USA/Ireland (1994). 103 min. Rated PG. English & Irish Gaelic.

With *The Secret of Roan Inish*, the director John Sayles, who has shown such skill at portraying the interplay of individuals and social structures, makes a rare leap into the realm of fantasy. Examining the obscure Celtic legend of the Selkie, a creature who is half human and half seal, he has created a touching cinematic meditation on people, familial roots, and the myths that sustain them.



May 16 GHOSTS OF CITE SOLEIL

Documentary. Denmark (2007). 88 min. Rated R. Haitian, French and English.

The UN has declared Cité Soleil, a Port au Prince slum, "the most dangerous place on Earth." It is presided over by sinister chimères or ghosts, violent young men allegedly employed and armed by then-President Jean-Bertrand Aristide. Filmmaker Asger Leth had unprecedented access to these guys, while they smoked joints by candlelight or managed their turf by day. The result is unlike any film you'll ever see. It's amazing it even exists and that the director is still alive.



Showtime: 8PM (free refreshments following)
Battelle Auditorium, Richland
Adults \$3 (Series passes \$13 or \$10 for BSA members)

More info: <http://bsa.pnl.gov/filmclub/> or 375-6811

OPEN TO THE PUBLIC

All non-English language films are subtitled.